

Manage **IT Infrastructure** on mobile.



## *Server Mobile Admin*

### *Quick Setup Guide*

*(V1.5)*

*Last update: 11/1/2014*

Copyright© 2014 InfraDog Inc. All rights reserved

# Server Mobile Admin

## *Key features*

Monitor and access your IT infrastructure anywhere, anytime simply by touch on your mobile phone

- Windows,VMware ESXi (vCenter and vMotion),Active Directory,Network Device
- IPMI hardware control for HP iLO,IBM RSA,Dell DRAC, Fujitsu ServerView
- Track physical server asset by Barcode
- Access server hardware warranty (HP, Dell, IBM, Fujitsu)
- Generate real-time server inventory report
- Agentless deployment,No firewall opening,VPN is NOT required
- Multiple InfraDog accounts on single mobile for Managed Service Provider

This guide will help you set up InfraDog solution with **3 simple steps**.

## ***Step 1: InfraDog Account Sign-Up***

Register at <https://portal.infradog.com/Account/Register> for free, you can also sign up through our “Server Mobile Admin” mobile app, available on [Apple Store](#) and [Google Play](#).

Your login information will be *your email address* with *Infradog password*.

- This login information will be used for future mobile app activation and Management Point activation.
- You can manage your account with this login ID through InfraDog Admin Portal <https://portal.infradog.com/Account/LogOn>

## ***Step 2: Management Point (MP) deployment***

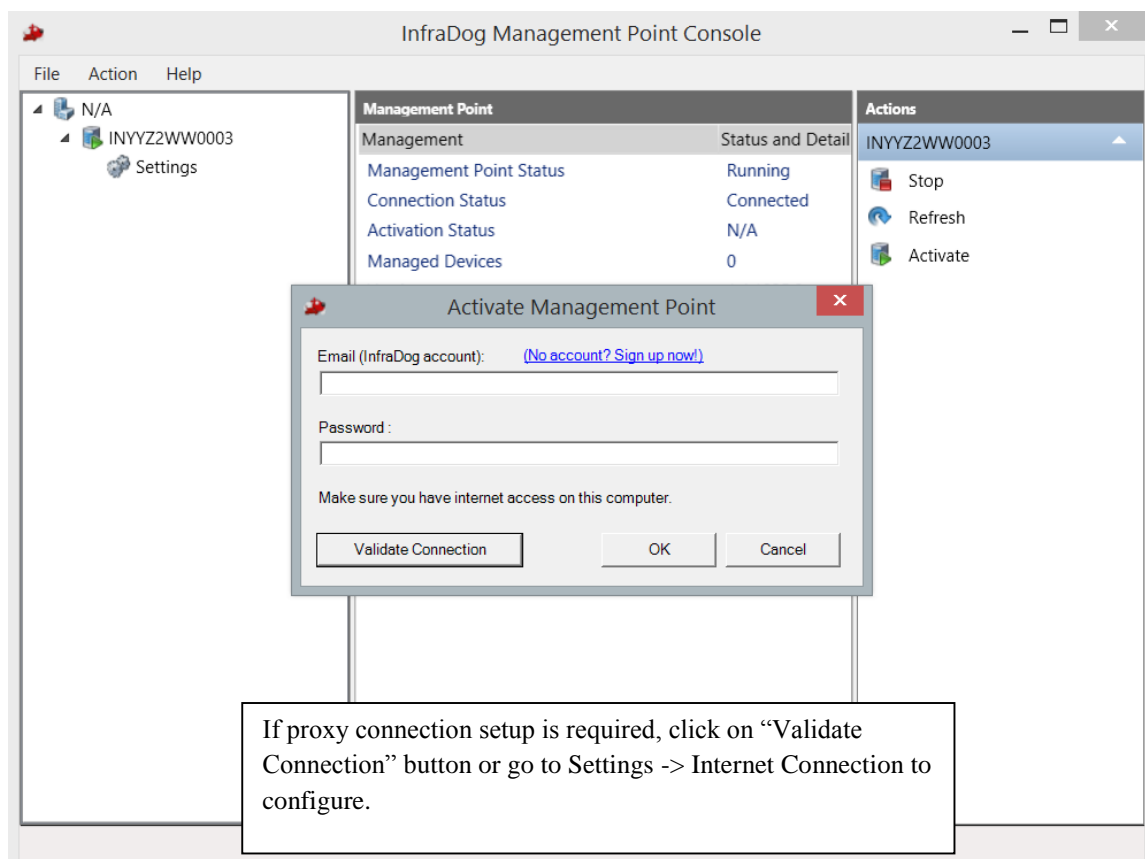
InfraDog Management Point (MP) is a small piece of software installed in your target network to work as access gateway for your mobile device.

- Management Point (MP) software can be installed on any Windows computer (Windows XP~Windows Server 2012) in your network.

- MP computer requires direct or proxy internet access. There is NO firewall opening or VPN required to make MP to work.
- MP is running as service on computer so you can close the MP console after the configuration but you have to leave MP computer always ON when you access your IT infrastructure from mobile device.
- You don't need to install MP on every computer your try to manage and we recommend you use InfraDog *agentless discovery process* to scan your network for your IT infrastructure and manage them remotely.
- Multiple MPs can be activated by same login ID for complex network subnet or sites.

## 1. Management Point Activation

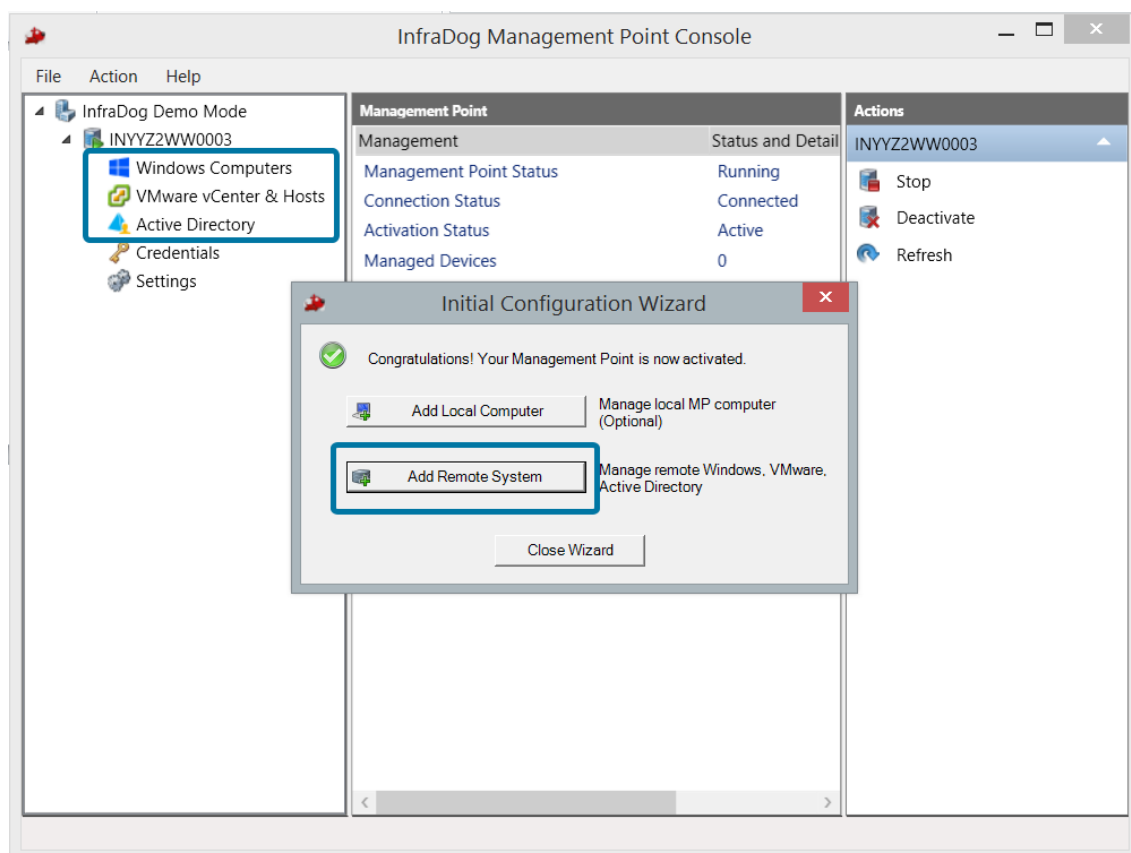
Download (<http://www.infradog.com/downloads.aspx>) & install InfraDog **Management Point** on any Windows computer with outbound internet access in your target network.



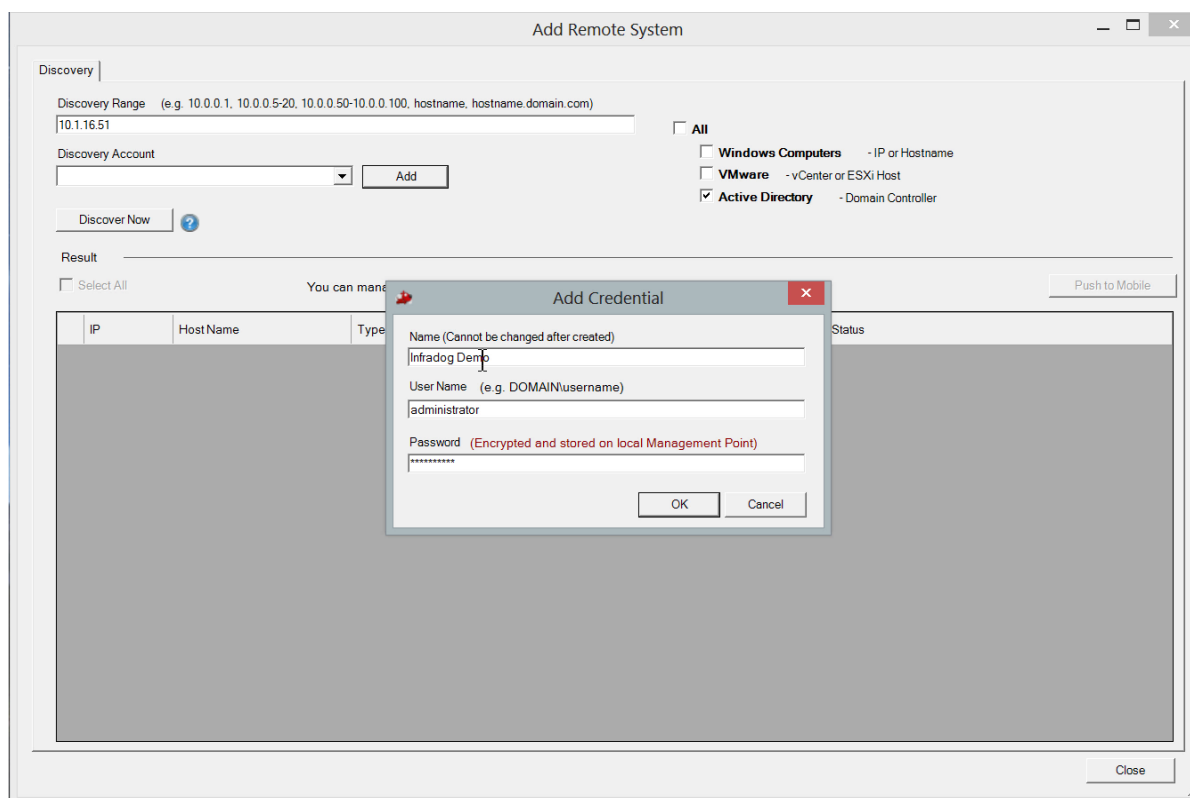
- Launch Management Point software and activate it with your InfraDog account.

- Make sure your MP computer has direct internet connection or you can configure proxy for Internet access.
- This is onetime activation. There is no dependency on this account for future MP operation.
- You could verify your login ID used for activation by login to our Web Portal <https://portal.infradog.com/Account/LogOn>

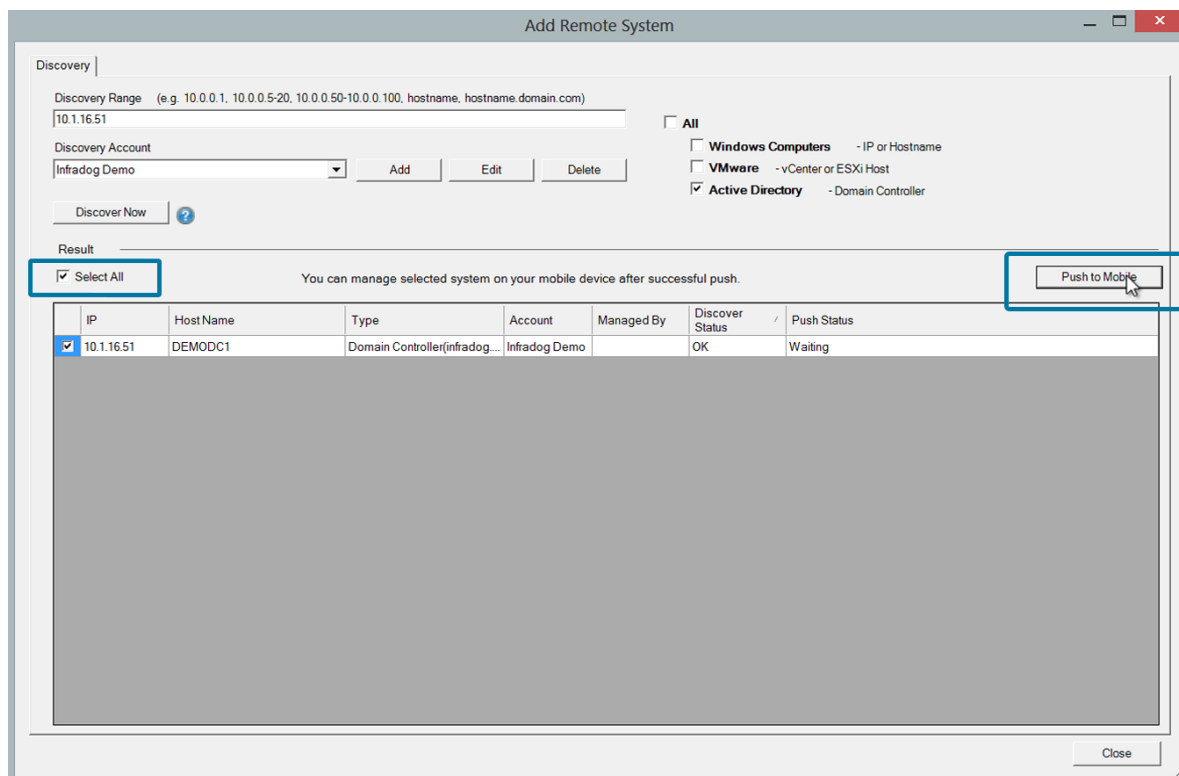
## 2. Agentless Discovery



- You can add local MP computer for mobile management by simply click “Add Local Computer” icon. This is optional and MP will still be fully functional without this operation.
- You can remotely discover your IT infrastructure (Windows; VMware; Active Directory; IPMI; Network Devices) without installing agent on them.



- Enter the discovery network range (Multiple ranges are supported) with the proper checkboxes you pick for discovery categories
- Create discovery credential which has full administrative rights for remote system. **All the account information will be encrypted and stored locally on your MP computer and never leave your network.**  
 Check security white paper for more information  
<http://download.infradog.com/download/InfraDog-Security-Whitepaper.pdf>



- Click **Discover Now** button.
- Once discovery process is completed (this may take several minutes depends on how big for your range), select the system(s) you would like to manage on mobile and click “Push to Mobile” button.

### ***Step 3: Access from Mobile***

After the push process is done, login to the mobile app with your account and you can manage all IT systems on mobile device.

Mobile app can be download

Apple Store:

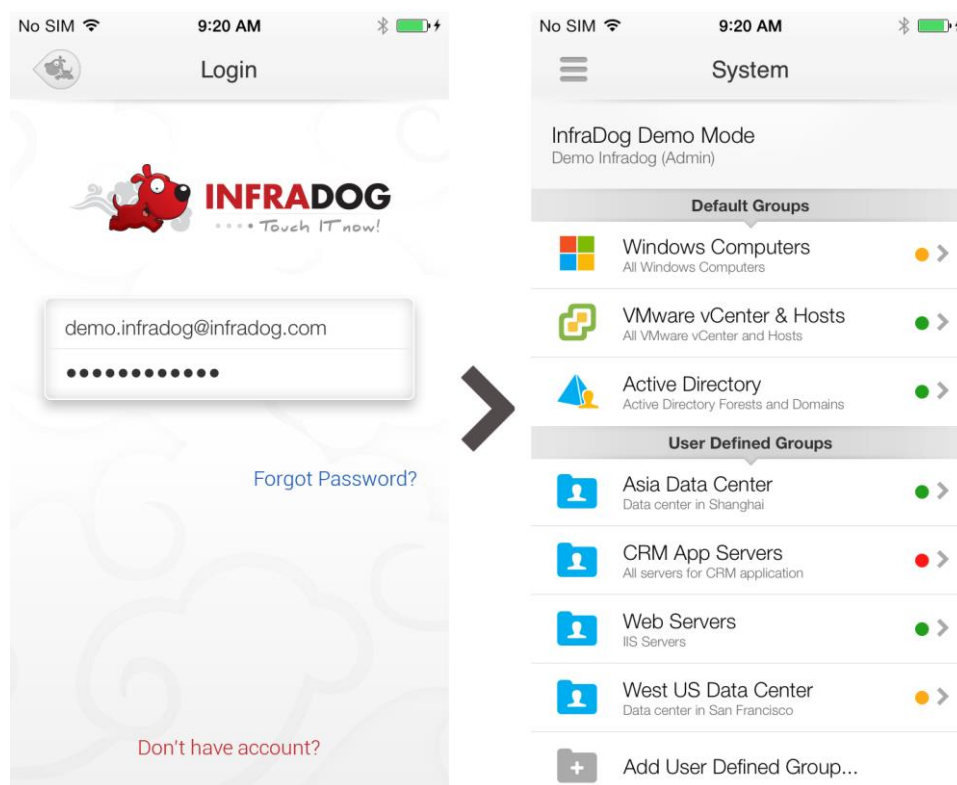
<https://itunes.apple.com/en/app/id588213260>

Google Play:

<https://play.google.com/store/apps/details?id=com.infradog.serveradmin>

Blackberry:

<http://appworld.blackberry.com/webstore/content/47537887/?countrycode=CA&lang=en>



- All system monitoring configuration is on mobile app no computer is needed (Computerless)
- You can invite more users to your account on mobile app ( Multi-users)
- You can add multiple accounts on same mobile device ( Multi-profiles)

## *Account Management*

To manage your account or subscribe to InfraDog service please login InfraDog admin portal

<https://portal.infradog.com/Account/LogOn>

InfraDog
Account
Welcome **Trial User** ▾

**INFRA DOG**  
.... Touch IT now!

- Getting Started
- Users
- Management Points
- Account
- Settings
- Help

**Trial Account with 18 Days Left,**  
 for uninterrupted monitoring service Subscribe

### Account Summary

**InfraDog** (Account Number: 40225)

Contact: Trial User  
Email: demo268@infradog.com Edit

Account Type	Trial
Paid Subscription	0
Rewarding Licenses	0
Total Licenses	Unlimited
Licenses In Use	0

### Account Management

Account Status	<b>Active</b>
Account Expiration Date	<b>Dec 01, 2013</b>
Subscribe to maintain your Account Status	<span style="color: #c00; font-weight: bold;">Subscribe</span>
Downgrade to Free Rewarding Edition	<span style="background-color: #f0f0f0; color: #ccc; font-weight: bold;">Downgrade</span>
Promotion Code <input type="text"/>	<span style="color: #c00; font-weight: bold;">Redeem</span>
Close your InfraDog Account <small>(All your stored data will be permanently deleted)</small>	<span style="background-color: #333; color: white; font-weight: bold;">Close Account</span>

Copyright © 2013 InfraDog Inc. All rights reserved.

- Monthly subscription and you can add more licenses anytime. ( 10 Free licenses for Small Business Edition on first time sign-up)
- Annual subscription is available by request.
- You can cancel subscription anytime with no extra charge.
- Detailed price list at <http://www.infradog.com/pricing.aspx>

Need assistance or have questions?

Video: <https://www.youtube.com/watch?v=iVu2Kt6XsZU&feature=youtu.be>

FAQ: <http://www.infradog.com/faq.aspx>

Tech support: [support@infradog.com](mailto:support@infradog.com)

Billing questions: [billing@infradog.com](mailto:billing@infradog.com)